

Rotary #4: 40 Unit



Dairy Statistics

- Farm location: West Gippsland
- Max. cows milked: 275
- Calving pattern: May - August
- Dairy type: Rotary
- No. of units: 40
- Labour units employed: 1 for most of the season



Automation Options

- ACR's
- Out of parlour teat spray
- Automatic drafting
- Rapid exit
- Electronic cow identification
- Milk metering
- Auto plant cleaning
- Auto vat cleaning
- Auto heat detection
- Integrated herd management software



Dairy Performance

The following performance figures were calculated at peak lactation using CowTime's Milking Monitor:

- 110 Cows per operator per hour (cups on cups off)
- 1700 Litres per operator per hour (cups on cups off)
- 1275 Litres per operator per hour (total milk harvesting time)



Dairy Builder

- Shed Design: Petschack & Hanily
- Phone: 0418 595 540



Special or key features of this dairy

- The design of this dairy makes it very easy to perform animal health related activities, such as blood testing.
- The shed is open allowing plenty of natural light.
- An extra bay on the shed would offer better protection during the cold winter months.
- The cows move quietly and comfortably through the dairy.
- Additional gates along the fence enable the yard to be divided into sections.
- Recently installed ACRs have enabled the dairy to operate with one person, though a second person is present during the calving period to ensure heifers settle comfortably into the new environment.

Disclaimer: "CowTime Dairy Designs has been published for your information only. It is published with due care and attention to accuracy, but CowTime, its funders and representatives accept no liability if, for any reason, the information is inaccurate, incomplete or out of date. The information is a guide only and professional advice should be sought regarding the reader's specific circumstances."

Rotary #4: 40 Unit

1. Yard Entrance
(from track looking into yard)



4. Dairy layout / cow entry
(looking from yard into dairy)



2. Holding yards
(from end looking toward dairy)



5. Inside Pit
(from holding yard end)



3. Holding yards
(from dairy looking towards rear)



6. Cow exit
(from outside shed looking into dairy exit)



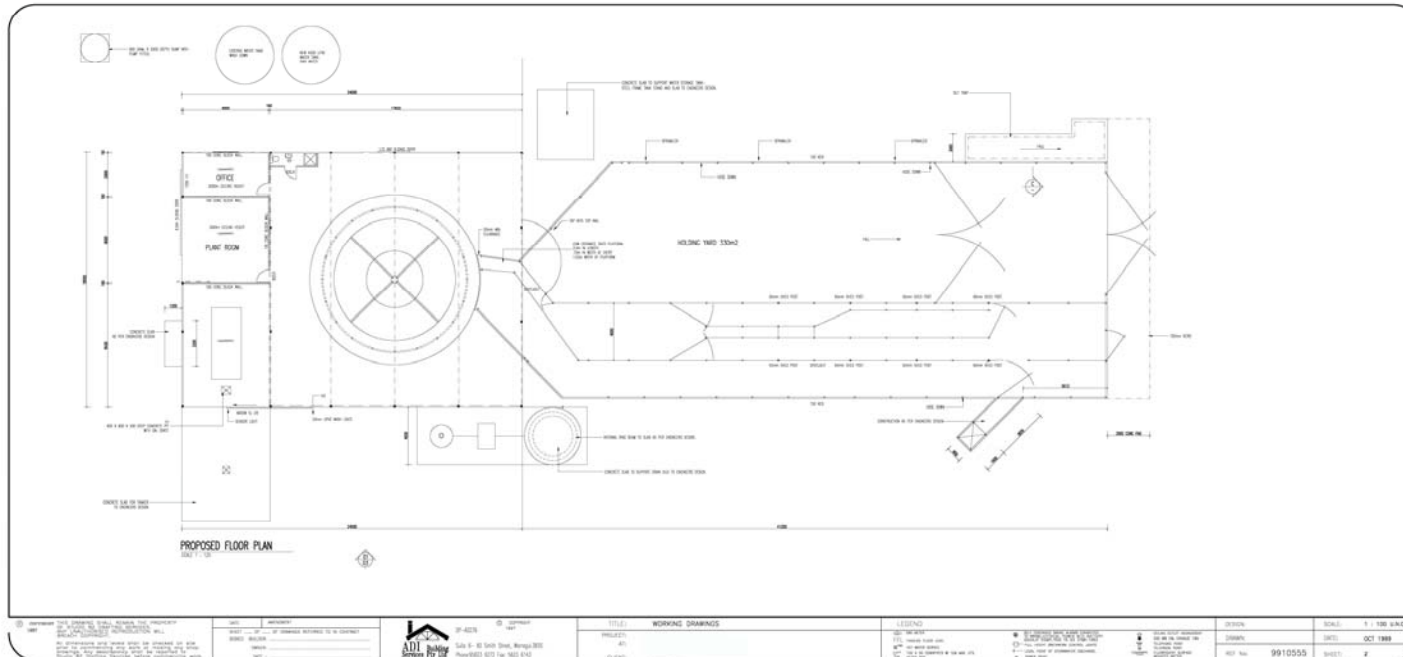
Disclaimer: "CowTime Dairy Designs has been published for your information only. It is published with due care and attention to accuracy, but CowTime, its funders and representatives accept no liability if, for any reason, the information is inaccurate, incomplete or out of date. The information is a guide only and professional advice should be sought regarding the reader's specific circumstances."



CowTime Dairy Designs



Rotary #4: 40 Unit



Disclaimer: "CowTime Dairy Designs has been published for your information only. It is published with due care and attention to accuracy, but CowTime, its funders and representatives accept no liability if, for any reason, the information is inaccurate, incomplete or out of date. The information is a guide only and professional advice should be sought regarding the reader's specific circumstances."